

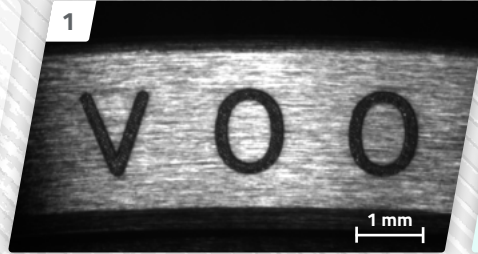
# Laser Engraving, with machine vision assistance



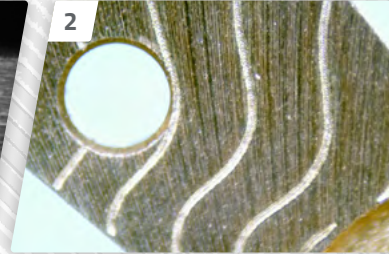
## APPLICATIONS

SWISS FLEXIBLE AUTOMATION SOLUTION

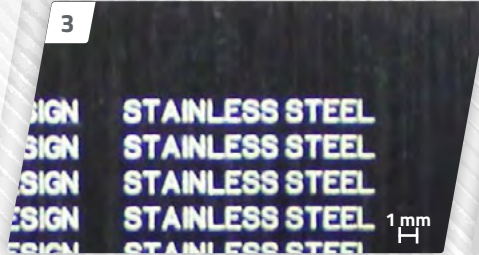
**1** Black deep engraving on watch ring



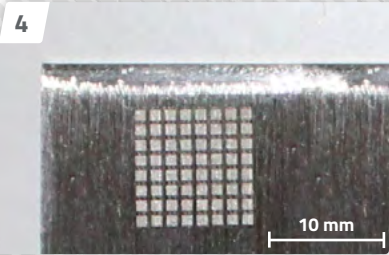
**2** Decorative engraving on watch component



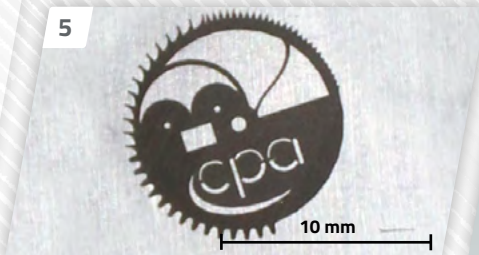
**3** White marking on luxury watch case



**4** Matrix engraving on brushed steel



**5** Precision engraving on watch gear



**6** Engraving of serial numbers on implantable medical device



CP Microparts Laser Engraver

## MACHINE CP Microparts Laser Engraver

### 📍 Repositioning

Automatic part localization and orientation.

### 🔧 Flexibility

Different types of laser and numerous axis configurations available.

### 🎯 Precision

The ns, ps or fs laser coupled to the 2D or 3D scanner is able to create high quality engravings.

### ✍️ Design

Compact and flexible machine design, based on the CP Series platform.

[more info...](#)



*"Offering faultless precision, it is so easy to use that engraving even the tiniest parts becomes child's play."*

Alexander Schwaller, Project Manager



Quick quote



Economic solution



Delivery time